

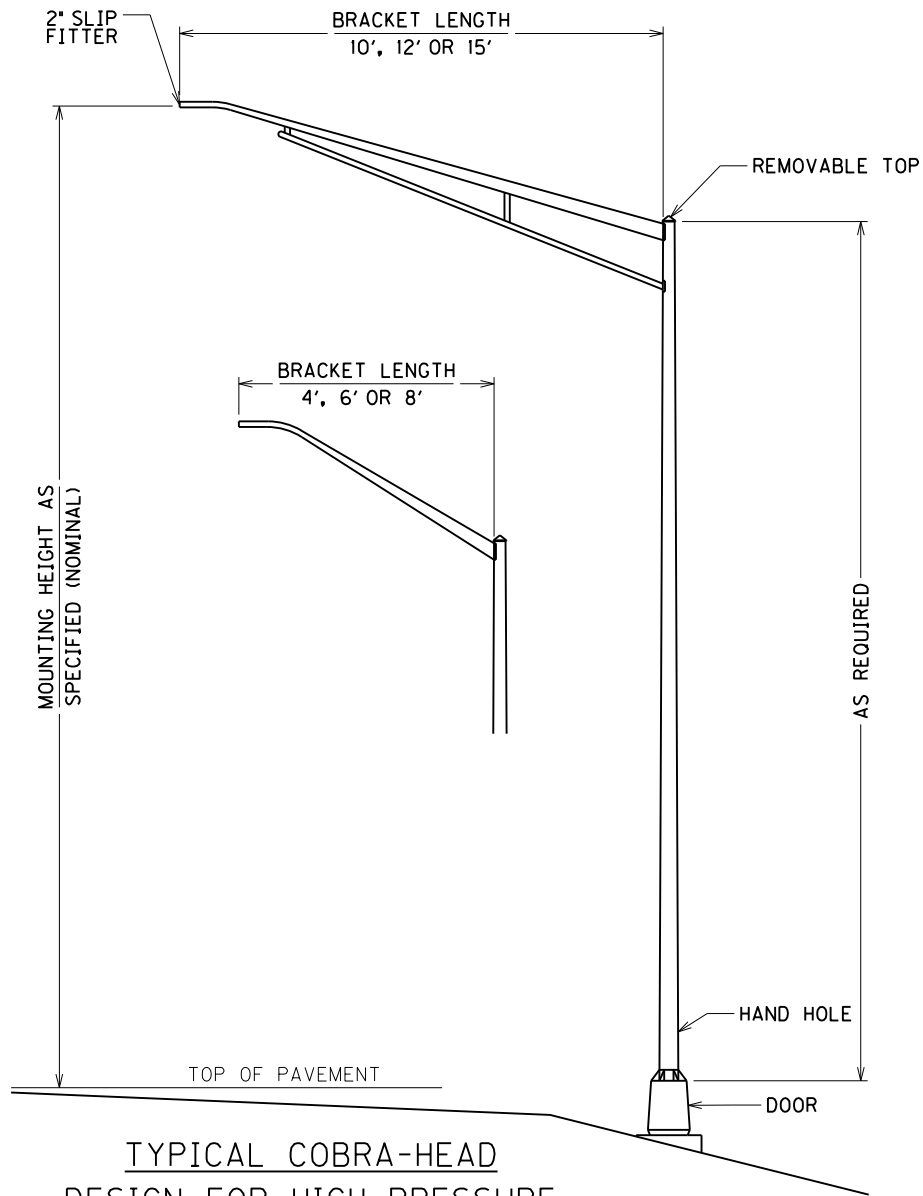
FILE NAME: G:\DOCUMENTS AND SETTINGS\TED.SWANSEGAR\DESKTOP\NEW FOLDER\04-COBRAFUSE (CL).DGN

USER: ted.swansegar
DATE PLOTTED: September 9, 2011

E-SHEET NAME:

MicroStation v8.11.7.180

6/10/2011

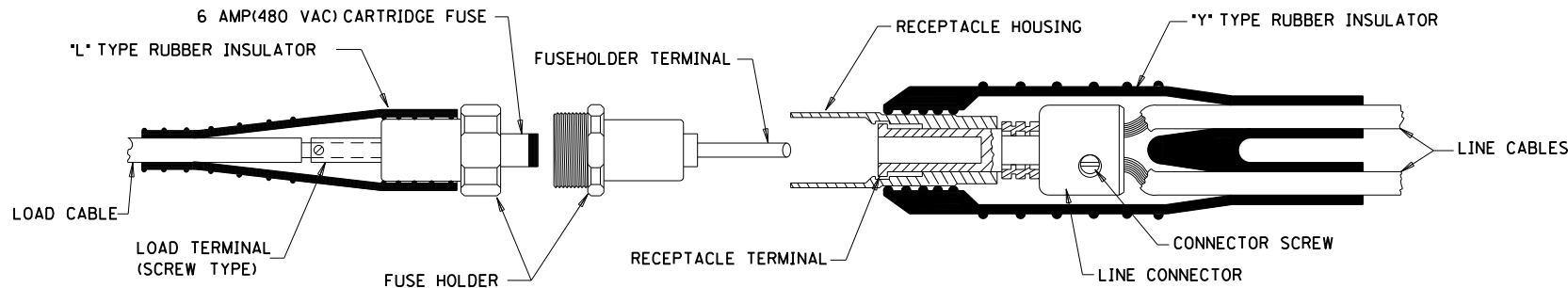


TYPICAL COBRA-HEAD DESIGN FOR HIGH PRESSURE SODIUM LUMINAIRES

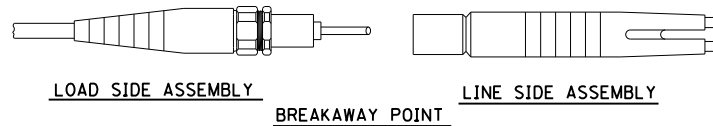
COBRA-HEAD LUMINAIRES:

LUMINAIRES SHALL BE HIGH PRESSURE SODIUM WITH AN IES TYPE II DISTRIBUTION PATTERN, PAYNE SPARKMAN STARTER (OR APPROVED EQUAL), AND BUILT-IN CONSTANT WATTAGE TRANSFORMER TYPE BALLAST.

BREAKAWAY FUSE CONNECTOR KIT



DETAILS OF TYPE HEB-JW-RYC CONNECTOR



TYPE HEB-JW-RYC CONNECTOR SHOWN

NOTE:

POLES AND BRACKETS SHALL BE ALUMINUM WITH A BRUSHED SATIN FINISH.

POLES WITH LUMINAIRE(S) AND BRACKET(S) SHALL BE MANUFACTURED AND CERTIFIED TO WITHSTAND 90 MPH WINDS WITH 117 MPH GUSTS.

HAND HOLES SHALL BE 4" X 6" NOMINAL WITH COVER AND STAINLESS STEEL SCREWS.

HAND HOLE AND TRANSFORMER BASE DOOR SHALL BE PLACED AWAY FROM TRAFFIC.

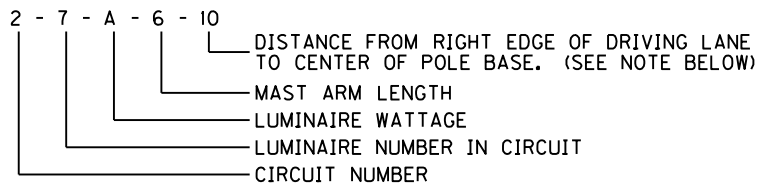
NOTE:

WHENEVER THE SPECIFICATION CONFLICTS WITH THE STANDARD SPECIFICATIONS, THE PLAN SPECIFICATIONS SHALL GOVERN.

FUSED CONNECTOR KITS:

1. DETAILS SHOWN HEREON ARE TYPICAL. ALTERNATE DESIGNS MAY BE SUBMITTED TO THE ENGINEER FOR APPROVAL. MINIMUM REQUIREMENTS AND SIMILAR MATERIALS MUST BE USED.
2. ALL CONNECTOR ASSEMBLIES SHALL BE OF WATERPROOF CONSTRUCTION, DESIGNED FOR DIRECT BURIAL IN THE EARTH AND EXPOSURE TO SUNLIGHT, AND SHALL BE CAPABLE OF REPEATED DISCONNECTIONS WITHOUT DAMAGE TO THE WATERTIGHT SEALS AND TERMINALS, OR REDUCING THE CONDUCTIVITY BELOW SPECIFICATIONS. IT SHALL BE THE RESPONSIBILITY OF THE CONTRACTOR TO FURNISH CONNECTORS RECOMMENDED FOR THE REQUIRED CABLE SIZES.
3. EACH CONNECTOR SHALL INCLUDE ALL PARTS AND MATERIALS NECESSARY TO COMPLETE ITS INSTALLATION, SUCH AS FUSES WHEN REQUIRED, LUBRICATING COMPOUND, AND ASSEMBLY DEVICES.
4. CABLE CONNECTOR TO BE USED IN POLE BASE ONLY.
5. MINIMUM OF 6 AMP(480 VAC) CARTRIDGE FUSE SHALL BE USED.

LUMINAIRE DESIGNATION EXAMPLE



NOTE: IF NO SETBACK DIMENSION IS INDICATED, THE MAST ARM LENGTH DENOTES THE DISTANCE FROM THE RIGHT EDGE OF PAVEMENT TO CENTER OF POLE BASE.

NOTE: ALL TYPE A LUMINAIRES ARE MOUNTED AT 30' (NOMINAL) 100 WATTS.
ALL TYPE B LUMINAIRES ARE MOUNTED AT 30' (NOMINAL) 150 WATTS.
ALL TYPE C LUMINAIRES ARE MOUNTED AT 40' (NOMINAL) 250 WATTS.
ALL TYPE D LUMINAIRES ARE MOUNTED AT 40' (NOMINAL) 400 WATTS.

COBRA-HEAD LUMINAIRE/FUSE
CONNECTOR DETAILS